



COMPANY ANNUAL REPORT SUMMARY

2018



LOGGED ON
Foundation

2018 SNAPSHOT



2

Schools assisted in 2 Districts



1

Building under construction



500

People benefited



18

Orphans sponsored



Photo (top): Former Chairman of the Astam Computer Education Centre, Raju Pariyar, RMIT Senior Lecturer, Dr Nicky Carr, and Logged On CEO, Mark Pinoli, meeting in Pokhara for the start of the Foundation's teacher placement program; (next page) panorama of the Annapurna mountain range from the village of Astam, one of the locations where pre-service teachers undertook their 2018 teaching practice.

About us

The Logged On Foundation is a development agency dedicated to helping children and community groups in less privileged areas of the world.

Since 2011, Logged On has been working in Nepal with local people, businesses and community groups who share a vision for creating educational opportunities for children.

We have built lasting friendships and trusting relationships that have been founded on an ethos of partnership in community development.

Logged On has benefited over 6,000 individuals in Nepal by working with more than 13 communities through our scholarship, technology and education, disaster assistance and volunteer teaching programs.

We are committed to the education of children and so our focus has been on supporting schools in their efforts to provide a quality education.

We support women's community groups through our "technology for education and training" program. Women have a key influence on decisions in the family that have a positive effect on the well-being and development of children. Therefore, not only are we committed to the empowerment of women, we also understand that by supporting them we can help create a positive future for their children.

Logged On's key objectives are:

1. To work with local communities to help them access the resources, information, skills and technologies they need to provide educational opportunities to their children.
2. Provide education and community empowerment programs that impact on the welfare of children and their families.

Activities include:

1. Teacher training and providing educational aids and resources to schools.
2. Scholarships and sponsorships for children.
3. Training and community capacity building programs.
4. School construction and infrastructure programs.
5. Establishing computer centres and using technology to: empower teachers and students; help build communities; promote change; and foster the development of '21st century skills' for transformative and sustainable educational programs for children and their families.



From the Board

This year we welcomed the first group of student teachers from La Trobe University being placed in Nepali schools on our Pathways Program with students from our long-term partner, RMIT University, also participating. It was the first time that we ran the program in multiple schools simultaneously. The Program was run very successfully, with the additional challenge of local elections being held during this period in Nepal, which resulted in the schools being shut for a week. During this down time we were able to place the teachers with orphans who the Foundation sponsors, to give them additional help with their studies.

We were also thrilled to have received 40 laptops from our partner, WorkSafe Victoria, which we will be bringing to Nepal in the next financial year, and which will be used in computer centre projects in four schools in rural Nepal. We are continuing our commitment to help rebuild classrooms at a school in the Gorkha District that was destroyed by the earthquake in 2015 and are pleased that this project has entered the final stage. We were also able to refurbish and paint a pre-primary classroom, add new technology to one of our computer education centres, support orphans in the Gorkha District, and help Australian pre-service teachers to develop their professional skills while helping school teachers and children at two rural schools.

To achieve these outcomes, we developed new relationships with two groups of donors and an Australian and a Nepalese Rotary Club. We continued to build on our relationship with three Nepali schools and one orphanage, two Australian Universities and a Victorian Government Department, in order to sustain our operations in Australia and to support projects in Nepal.

These diverse projects were developed with full community cooperation and are a testament to how our organisation can adapt to the needs of Nepali schools while meeting the expectations of our donors. Over the years, we have shown our commitment to utilise all of our efforts and resources to ensure the maximum possible benefit for the communities we serve. This would not have been possible without the efforts of our Directors and volunteers in Australia and Nepal.



We are pleased to report that the Logged On Foundation's financial standing is positive and we will position the organisation for an even better future.

A heartfelt 'thank you' to everyone who has supported our work in 2018. We are very grateful for your contribution and generosity.

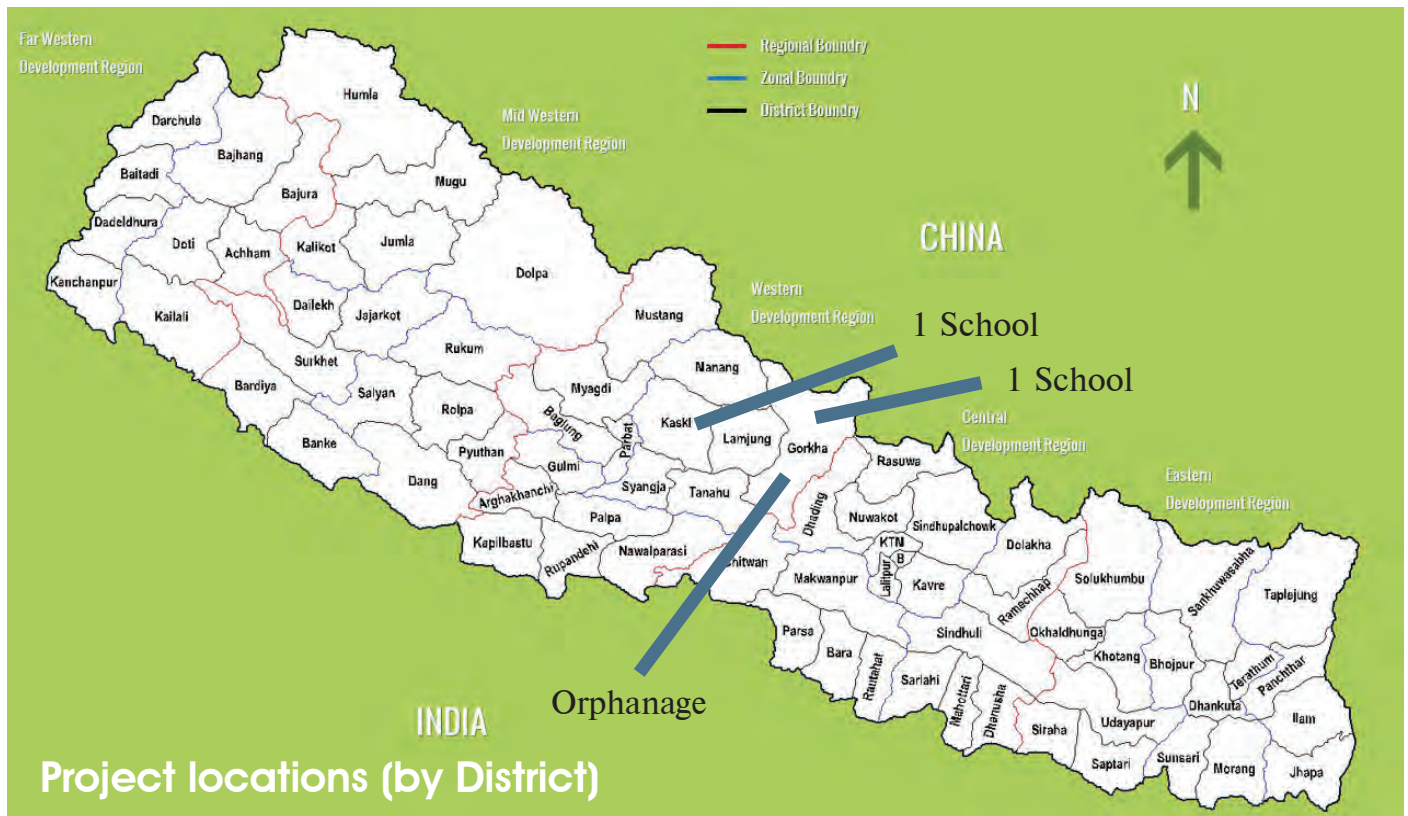
Dr Bruce Mackintosh
Chairperson

Mr Mark Pinoli
Chief Executive Officer

Photo: The Principal of the Shree Bhumeswor School using teaching materials developed by volunteer teachers from Australia.

Project reports

We present the details of our new programs and existing projects where we have made a contribution in the 2017/18 financial year.



Child sponsorships

LOCATION

Chhahare, Gorkha Bazar, Gorkha District

INSTITUTION

Shree Bal Mandir Orphanage

Now in its third year, our Child Sponsorship Program is supporting 18 orphaned children at the Bal Mandir Orphanage. The aim of the Program is to work with the orphans and the orphanage to create lasting and meaningful changes by supporting the children through years of schooling and helping to create a healthy and happy community.

Sponsors from Australia and Canada are helping

to create a positive future for the children. We have been keeping donors in contact with their sponsored child and provide letter exchange and progress reports annually. Not only is the program linking sponsors more closely to the orphan community their donations are helping, the children also understand and appreciate that there are families in other countries who are genuinely concerned with their welfare.

Every year, in addition to individual sponsorships, we attempt to complete a project that is of benefit to the orphanage community. As reported last year, we were able complete a water capture, storage and filtration system at the school where the orphans live and study which was of great benefit particularly during the dry season. This year, we were able to source special funding from donors to replace the beds for all the children including bedding material (see photo below).

We were also able to place two pre-service teachers

from Australia at the School where the orphans attend for four weeks and an additional four teachers for three days working directly with the orphans. After school hours and during holidays, the teachers were able to provide additional tuition to help boost their study techniques and English communication skills which is part of the Nepali curriculum.

The children have struggled writing letters to their sponsors and so the Principal of the orphanage made a special request for help. As a result, the teachers ran a special three-day letter writing workshop to help the children reflect on what they achieved during the year and how to express this in their letter. At the completion of the program, we were able to collect letters from all of the children for distribution to their sponsors (see the Pathways Program report below). We were particularly excited at how artistic the children were when they produced beautiful artworks for their sponsors.

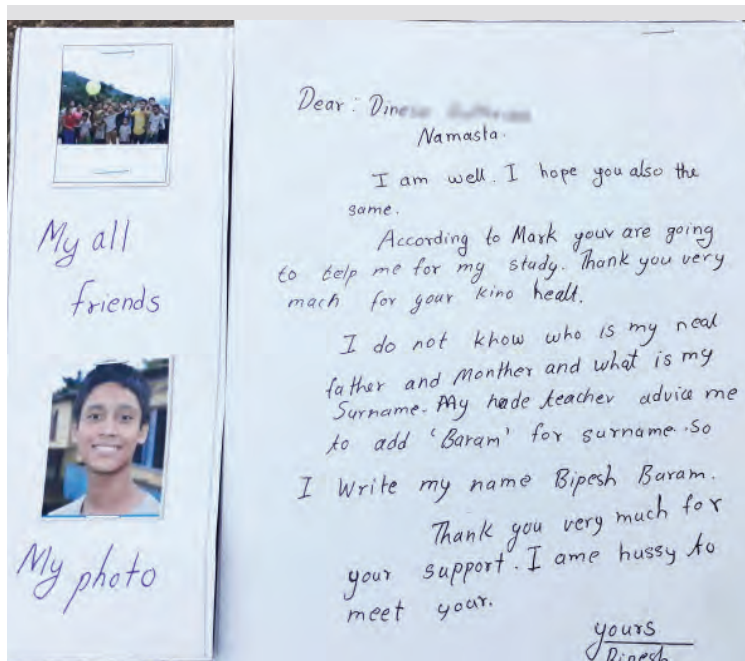


Photo (top-right): Old beds and bedding at the Bal Mandir Orphanage that was subsequently replaced with the help of sponsors. (top-left): Orphans with Australian pre-service teachers and Logged On CEO at the start of the four week teaching program. (top-right): Day one of the letter writing workshop. (bottom-left): a letter from Dinesh that was carried to Australia and posted to his sponsor in NSW. (bottom-right): Shakti's letter to his sponsor with one page of his artwork.



Pathways Program

Since 2011, Logged On, together with our local partners and community leaders, has created opportunities for volunteers from around the world to share their knowledge, time and goodwill towards making contributions to the needs of the schools and community groups we serve.

The Pathways Program responds to the needs of local communities and this year we are pleased to report that two schools made a request for volunteer teachers to be placed in their schools to assist in teaching primarily the local English language curriculum.

Following on from our signing of a Memorandum of Understanding with La Trobe University last year, we were able to place three La Trobe pre-service teachers in two schools in Nepal for four weeks - the Shree Bal Mandir (Gorkha) and Shree Bhumeswor (Astam) schools.

We also had four teachers from our long-term partner RMIT University in Melbourne participate in the program. The teachers spent three days in Gorkha with the remaining placement time spent

at the Shree Bhumeswor School in Astam, around 25km North-West of Pokhara.

In addition to helping local schools, the program is also tailored towards helping participants gain practical experience in their chosen field of study. By being immersed in Nepali culture, living in a village and working in the local school, past participants have experienced powerful life-changing moments as well as professional challenges.

We received very positive feedback from participants in their post-placement assessments and have also received valuable input from the Principals of the two schools so we can further improve the program for next year.

In total, we had seven placement students and one lecturer participate in this year's Program. They worked with children in pre-primary and grade one through to grade nine. The focus was predominately teaching the local English curriculum and also included mathematics and outdoor education.

We would like to give special thank to Dr Nicky Carr for her contribution this year and ongoing support over the years.

Photo: RMIT students taking a computer class at the Bhumeswor school in November 2017.



Photo: (top) a collection of photos of Australian Pathways Program participants working with local teachers to develop teaching material and delivering lessons to children ranging from pre-primary to grade nine. The schools were located in the Kaski and Gorkha Districts of Nepal.

Chandra Kala School rebuilding program

LOCATION

Takumajhalakuribot, Gorkha District

INSTITUTION

Shree Chandra Kala Lower Secondary School (330 students)

Last year, we were able to commence a new initiative that was born from our disaster assistance work following the 2015 Nepal earthquake, the reconstruction of a school building at the Shree Chandra Kala School in the Gorkha District.

We were able to secure permission from the Gorkha District Education Office (DEO) to provide further assistance through the reconstruction of a four-room building at the lower level, with capacity to add an upper floor at a later date. The plans used for the



Photo: (top) New building being constructed by the Foundation as reported in last year's company report. (bottom): Rotary donation contribution to the roofing being handed over to the school Principal by the Rotary Club of Gorkha.

reconstruction are for a government-approved, earthquake-resistant building. The DEO agreed to monitor the project to ensure that it follows government guidelines, and to audit the project on completion.

So far the building foundations, reinforcement, walls and windows have been completed (see photo below) and was reported in last year's Company Annual Report. In June this financial year, we were able to transfer just under \$10,000 to commence the completion of a concrete roof. We were also able to secure \$2,000 from the Rotary Club of Melbourne as a contribution to the funding to complete the roof.

Logged On's connection with the Rotary Club of Gorkha allowed us to establish a connection between the two Clubs and the \$2,000 was transferred to Rotary Gorkha for presentation to the Chandra Kala school Principal.

Astam Education Centre

LOCATION

Village of Astam, Dhital VDC, Kaski District

INSTITUTION

Shree Bhumeswor Lower Secondary School (60 students)
Principal: Chubby Poudel

The Foundation has had a long-term relationship with Shree Bhumeswor having completed our first project in Nepal at the school in December 2011. Over the last seven years, we have been able to provide upgrades to the computer centre we installed in 2011, place Australian educators to help with teaching, and provided a variety of training programs and educational material support.

This year, we were able to secure special donor funding to improve facilities at the school in two areas:

1. Several of the teachers at the school attended a British Council training program in Kathmandu where they were introduced to a variety of pedagogical approaches as well as the use of appropriate technology in the classrooms. They made a request for a smart TV so they could source educational material on a USB drive for display on the TV. Our donors were happy to accept their request and a 55" TV was installed in the existing computer education centre building originally installed by Logged On.

2. During our visit to the school in November 2017, we found that there were significant improvements made to grade one to five classrooms to make them more child friendly. Children were completing work on one large table in collaboration with each other, rooms were painted and educational material and books available to them in the classroom. One room that was seriously neglected however was the pre-primary class. We had the funding to provide new furniture and cushions, paint the wall and with letters of the alphabet, and to provide new carpet. Our contribution was therefore to create a more friendly and comfortable space for the children to learn.



Photo (top & bottom left): The pre-primary classroom before and after the makeover. (right): Children watching a presentation by Bhumeshwor teacher Sita Adhikari. Sita was able to download material and prepare a slide show at home in Pokhara (where internet is faster), placed it onto a USB drive, and then inserted into the smart TV for viewing. Preparing rich educational materials - video, photos, animation - for classroom instruction will make a significant impact on local education. Students are normally used to learning from textbooks that are printed in black only and without colour or grey scale pictures or photos.

Key people in 2018

We would like to thank our donors and sponsors, and the businesses who contributed to the projects. We would also like thank the following people who freely gave their time to help us fulfil our development objectives in Nepal and Australia.



Sudip Aryal
Director on the Board of Directors & In-country Director



Sital Muskey
Gorkha District Coordinator



Anjan Tripathi
Community relations



Chenna Vu
IT Initiatives



Michelle Slattery
Strategic initiatives



Gabriella Olszewski
Fundraising (WA)



Matthew Jones
Policy and Financial Advisor



Bev Langdon
Administrative Officer



Ves Raj Bastola
Education & Training
Local volunteer coordinator



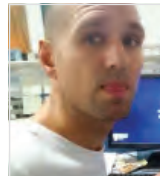
Monica Lamperd
Pathways Program



Dr Bruce Mackintosh
Chairperson
Board of Directors



Michael Broomfield
Director
Board of Directors



Daniel Lombardo
Digital initiatives



Mark Pinoli
Chief Executive Officer & Company
Secretary



Margie Lamperd
Child Sponsorship Program



© Logged On Foundation Ltd (ABN: 66 584 801 535)
Northcote, Victoria 3070, AUSTRALIA
Tel: +61 (03) 9486 1459 | Email: admin@loggedon.org.au
www.loggedon.org.au

ISSN 22073191

Photos (cover page and rear): photos of our volunteer teachers working in collaboration with local teachers to deliver the local curriculum.